



# BEEHIVE METALWORKS

FORGING MEMORABLE SPACES

WE DEVELOP METAL AND GLASS SOLUTIONS FOR  
INTERIOR APPLICATIONS



## CREATE WITH BEEHIVE

Beehive Metalworks is a family-run business dedicated to crafting steel doors for interior spaces. By focusing on interiors, we can fabricate quicker, offer competitive pricing, and ensure a seamless fit with your design.

Through partnerships with top-tier manufacturers around the globe, we combine exceptional vision and craftsmanship to produce projects that both inspire and endure. Recognizing that every client's project is unique, our flexible and custom approach adapts to your needs—delivering solutions that are truly one-of-a-kind.





# Profiles Made for Interiors

## Slimline Steel Series

**Customizable:** Slimline allows for creative design solutions to provide luxury and elegance to interior spaces.

**Streamlined:** Simple profiles combined with Beehive's unique fabrication processes lower prices and improves lead times.

**Symmetric Design:** Slimline Symmetry features a centered glass detail providing balance to both sides of the frame.



### Symmetry

**Build Bigger & Narrower:** Variable sizes provide optimal sightlines while accommodating unit size.

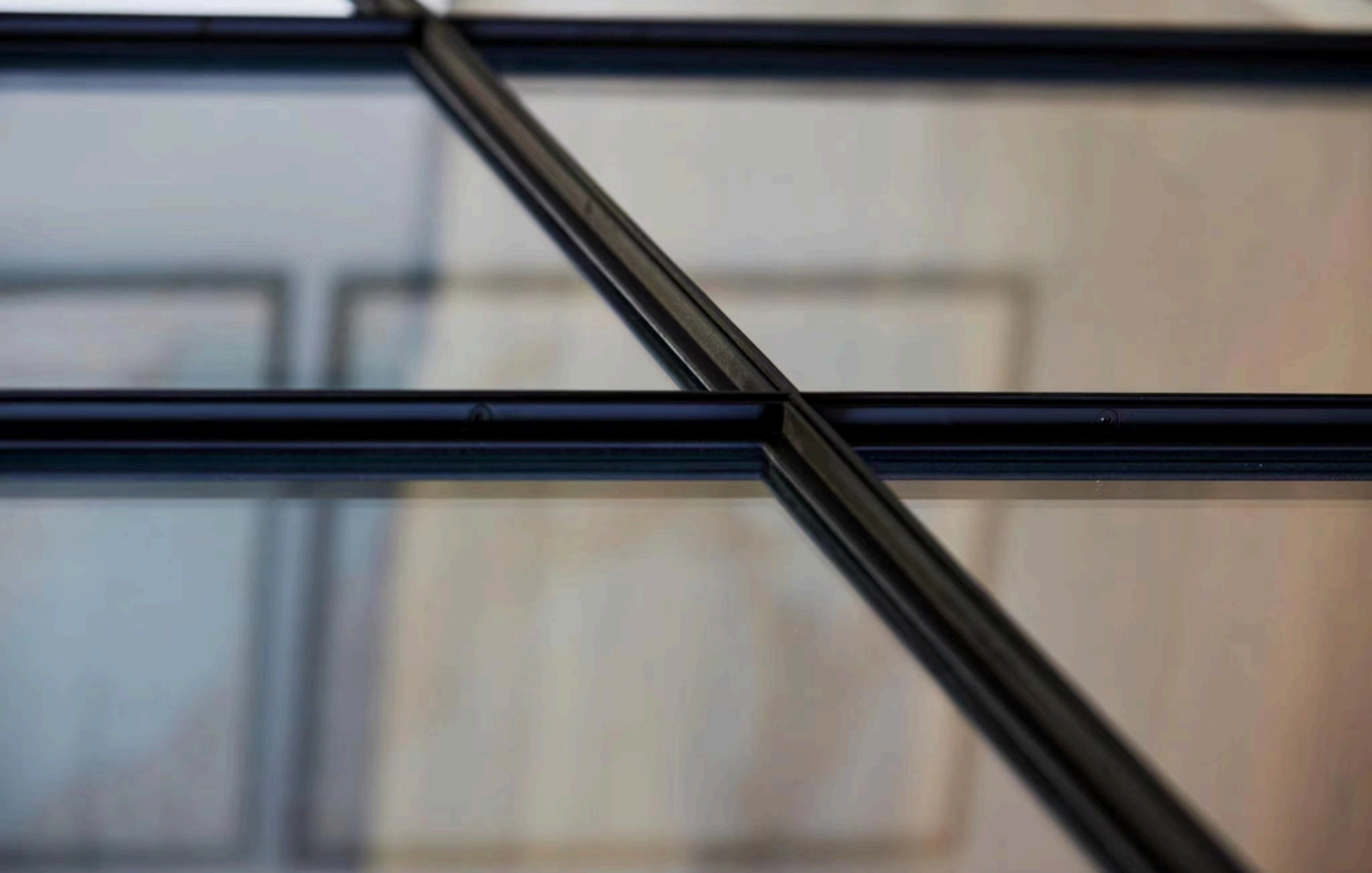
**Durable:** Never compromising quality, profiles are made with 12ga galvanized steel providing enhanced strength and sustainability.

\*Thermally-broken options are available for all profiles.



### Edge





## W20 Steel Series

**Renowned Manufacturer:** Produced by Montanstahl, a leader in steel profile manufacturing, ensuring unparalleled quality and craftsmanship.

**Elegant Narrow Design:** The W20 profiles feature a sleek, narrow design, perfect for achieving the traditional steel door aesthetic highly sought after in high-end architecture and design.

**Hot Rolled Process:** W20 profiles undergo a hot rolled process for enhanced corrosion resistance, making it ideal for areas such as showers.

**Sustainable Strength:** Constructed with robust materials for long-lasting durability, meeting the highest standards of sustainability and strength.

**Interior Applications:** Ideal for both high-end residential and commercial interiors, the W20 profiles cater to the sophisticated needs of builders and designers.





## PRODUCT OFFERINGS

HINGED DOORS

POCKETING DOORS

PIVOTING DOORS

BARN DOORS

FIXED WALLS/DIVIDERS

CABINET DOORS

TOP HUNG SLIDING DOORS

BOTTOM TRACK SLIDING DOORS

THERMALLY BROKEN WINE ROOM DOORS

BI-FOLD/ACCORDION DOORS

SHOWER ENCLOSURES

CASEMENT WINDOWS





# STANDARD HARDWARE

Our standard hardware is custom made by our skilled welders or supplied by Hoppe, Steel Window Fittings, and Emtek. Other third-party hardware are available upon request.



# GLASS TYPES



CLEAR



GRAY



TEA



WOOD



REED



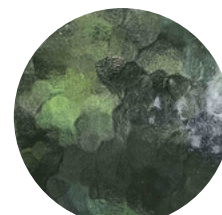
RAIN



GLUE CHIP



FROSTED



AQUATEX



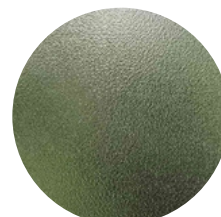
WATER CUBE



WATER RIPPLE



FLEMISH



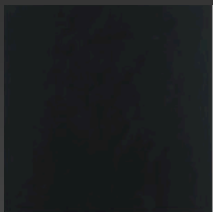
PEAR



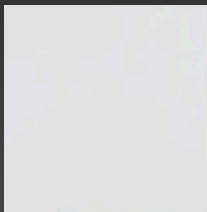
# SURFACE TREATMENT

Before painting, steel frames undergo sanding and degreasing to ensure a quality and strong paint adhesion. The first layer is a double epoxy zinc rich primer to prevent rust. The second layer is a middle coat, sealing the zinc primer. Following is the tetra-fluorocarbon paint which will be 170–240m thick. Finally, a clear coat to protect the painted surface.

## Popular Finishes



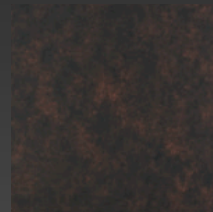
BLACK



WHITE



SILVER PEWTER



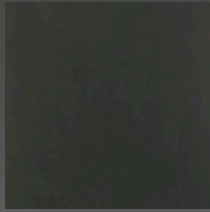
ANTIQUÉ COPPER



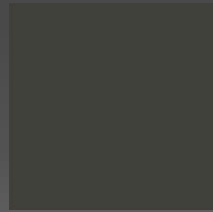
LIGHT BRONZE



HEAVY BRONZE



GOLD RUSH




TAUPE

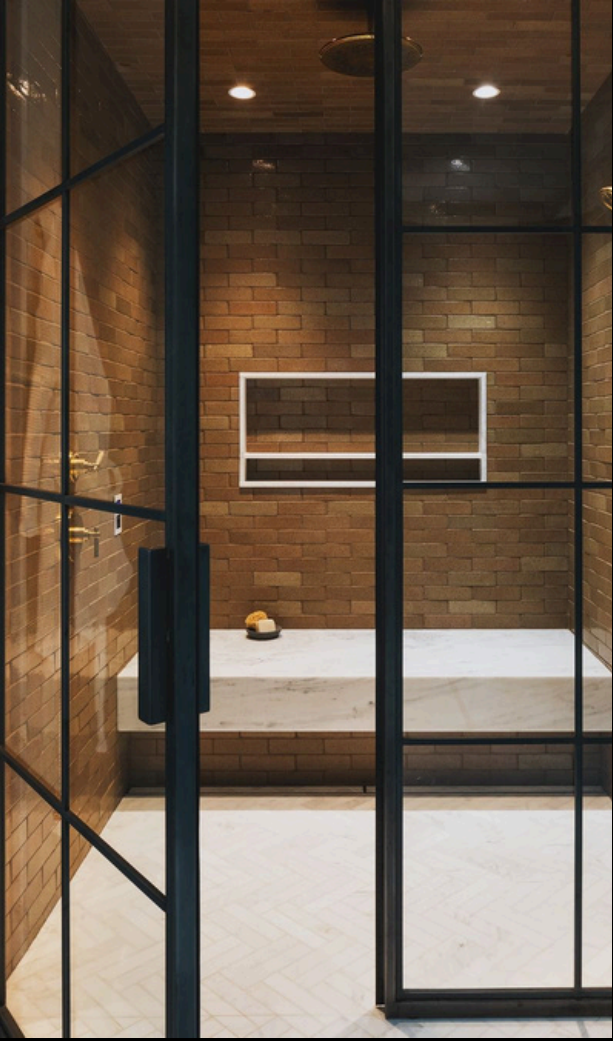
There are 15 standard paint finishes currently offered. Custom colors may also be matched to meet client needs.



# Competitor Comparison

	Formal Quote	Shop Drawings	Production	Total Project Time	Price 10'x 8' Sliding Door
	1-2 Days	3-5 Days	8-12 Weeks	9-13 Weeks	\$11,200
Competitor Averages	7-14 Days	14-35 Days	20+ Weeks	23+ Weeks	\$17,100







BEEHIVE  
METALWORKS

[beehivemetalworks.com](http://beehivemetalworks.com) • 816-226-8850  
[sales@beehivemetalworks.com](mailto:sales@beehivemetalworks.com)